

# BARTOLI

## BSR Natural



The fibreboard BSR has been developed by Bartoli company following the precise requirements of the technical teams from most prestigious international footwear brands.

Its compactness, plasticity and strength allow it to be used in extreme machining with excellent results. Ideal for those who have to produce a very high quality product.

### DESCRIPTION

IMAGE  
SCALE 1:1



COLOR	PRINT	THICKNESS	MASTER SHEET	STANDARD SIZES
beige	bianco	3,0 mm	3300 x 4800 mm	fogli 1070 x 1570 mm

### FEATURES



### CONNOTATIONS



### CERTIFICATIONS

MANUFACTURING PLANT LUCCA - 100% MADE IN ITALY





SHEET SIZE mm	THICKNESS mm	GR/CM <sup>2</sup>	KG/SH *	SH x PL
1070x1570	3,0	1,15	5,79	180

**TECHNICAL DATA**

\* Theoretical weights

Possibility to offer on demand specific sheet sizes, thicknesses, strips and sheets-roughing. The technical product values are reference values and may be subject to modifications. Each value is subject to minimum tolerances due to the use of recycled raw materials.

**NOTES**

TEST TM11	NAILING RESISTANCE	★ ★ ★ ★ ★
TEST TM80	DELAMINATION	★ ★ ★ ★ ★ ✨
TEST TM2	LONGITUDINAL/TRANSVERSAL TRACTION	★ ★ ★ ★ ★
TEST TM BAR01	RIGIDITY	★ ★ ★ ★ ★
TEST TM112	FATIGUE RESISTANCE	★ ★ ★ ★ ★

**MECHANICAL TEST**

TESTED BY





*"Our environmental policy, which began many years ago, has always been oriented toward a scientific approach, never ideological, making use only of well known certifications issued by qualified and internationally accredited institutes, in compliance to the regulations and norms of over 80 countries where Bartoli company operates and private international brand requirements."*

**APPLICATION**



**100% RECYCLED**

**COMPOSITION**



Recycled raw materials are carefully selected and controlled by the qualified supply chains. We use high performances pulp which pass both mechanical and chemical tests.



**TAKE BACK.** By this project we recover "insole-factory cuttings" directly from the footwear supply chain. The "insole-factory cuttings" are collected and returned to our company to be re-used in our production process. This further increases the circularity rate and reduces waste generation.



In cooperation with Intertek laboratories, for the chemical monitoring by constant tests on our raw materials and products in compliance with international regulations. In addition, the most restrictive limits of luxury brands become our benchmark limits.



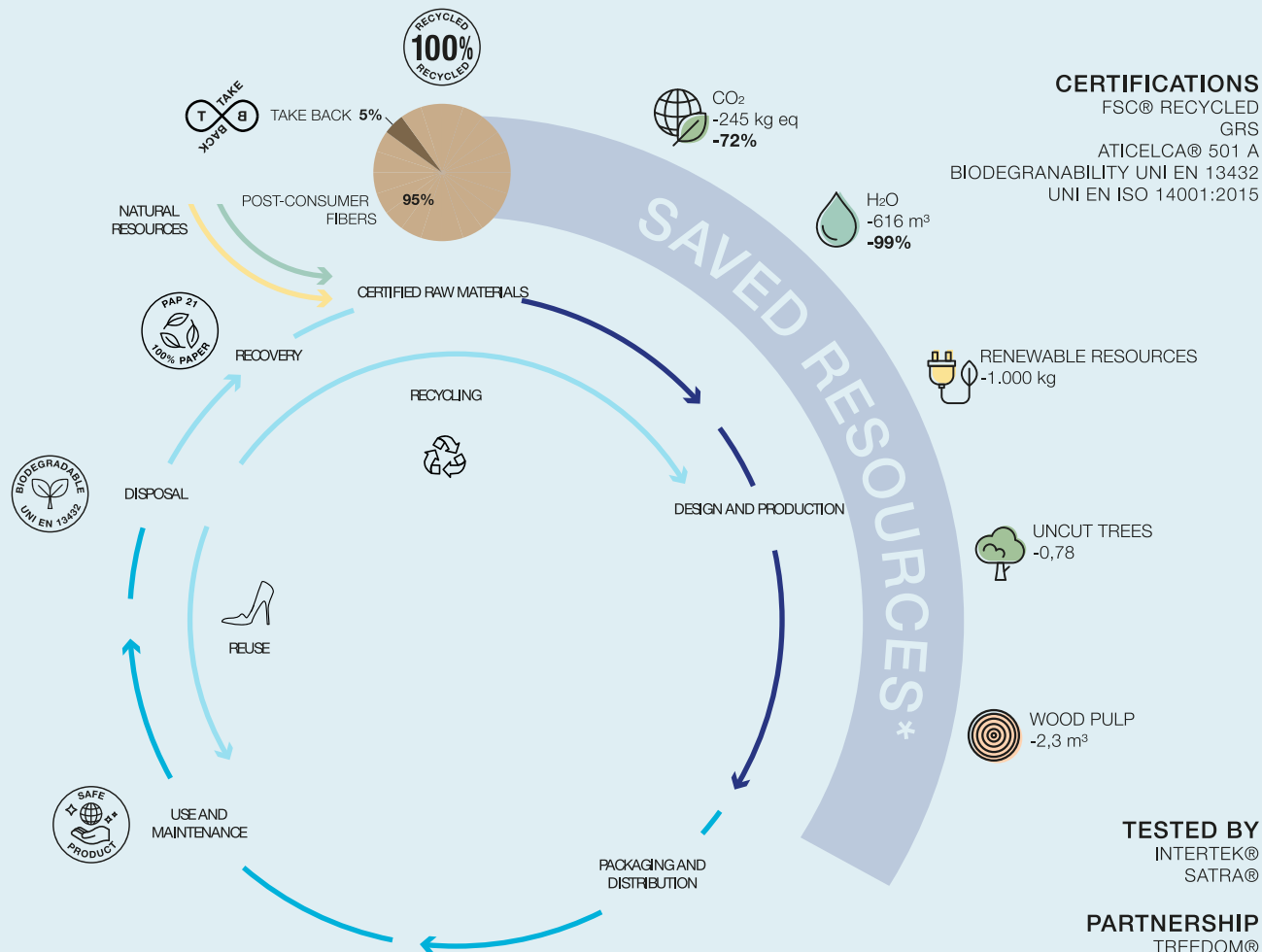
Sign up to our newsletter  
to get updates on our products.  
FRAME HERE



# LIFE CYCLE THINKING



## BSR Natural



1000 PAIR OF SHOES MADE FROM BSR NATURAL 3mm**		<b>SAVED RESOURCES</b>	CO <sub>2</sub> -19 kg eq	H <sub>2</sub> O -48 m <sup>3</sup>	<b>ENVIRONMENTAL IMPACT REDUCTION</b>
			RENEWABLE RESOURCES -77 kg	UNCUT TREES -0,06	

\* Theoretical savings values with the use of recycled paper compared to virgin paper per ton (LCA study - ERGO - Sant'Anna - Pisa).  
 \*\* Theoretical savings values with the use of recycled paper compared to virgin paper per 77 Kg (LCA study - ERGO - Sant'Anna - Pisa).



Sign up to our newsletter to get updates on our products.  
 FRAME HERE



LCT  
 BSR Natural  
 12/2023