

# BARTOLI



## BCR Superior Quality

The BCR cardboard was developed by Bartoli spa following precise requests from the technicians of the most prestigious Italian footwear brands. It is an answer to the search for compactness, rigidity and lightness. It guarantees the insole reliability, high mechanical performances in terms of resistance, delamination and rigidity over time.

### DESCRIPTION

IMAGE  
SCALE 1:1



COLOR	PRINT	THICKNESS	MASTER SHEET	STANDARD SIZES
dark red	black	1,5 - 3,2 mm	3300 x 4800 mm	sheets 1070 x 1570 mm - LG
				sheets 1540 x 1570 mm - SG
				sheets 1540 x 960 mm - SG
				sheets 1540 x 1280 mm - SG

### FEATURES



### CONNOTATIONS



### CERTIFICATIONS

MANUFACTURING PLANT LUCCA - 100% MADE IN ITALY



PRODUCT INFO SHEET 1/3  
BCR Premium Quality  
06/2023



SHEET SIZE mm	THICKNESS mm	GR/CM <sup>3</sup>	KG/SH *	SH x PL
1060 x 1580	1,5	1,15	2,89	360
1060 x 1580	2,0	1,15	3,85	270
1060 x 1580	2,2	1,15	4,24	245
1070 x 1570	2,5	1,12	4,70	215
1070 x 1570	2,8	1,12	5,27	195
1070 x 1570	3,0	1,12	5,64	180
1070 x 1570	3,2	1,12	6,02	165
1540 x 1280	2,5	1,12	5,52	
1540 x 1280	2,8	1,12	6,18	
1540 x 1280	3,0	1,12	6,62	
1540 x 1280	3,2	1,12	7,06	

\* Theoretical weights

**TECHNICAL DATA**

Possibility to offer on demand specific sheet sizes, thicknesses, strips and sheets-roughing. The technical product values are reference values and may be subject to modifications. Each value is subject to minimum tolerances due to the use of recycled raw materials.

**NOTES**

TEST TM11	NAILING RESISTANCE	★ ★ ★ ★ ☆
TEST TM80	DELAMINATION	★ ★ ★ ★ ☆
TEST TM2	LONGITUDINAL/TRANSVERSAL TRACTION	★ ★ ★ ★ ☆
TEST TM BAR01	RIGIDITY	★ ★ ★ ★ ☆
TEST TM112	FATIGUE RESISTANCE	★ ★ ★ ★ ☆

**MECHANICAL TEST**

TESTED BY





*“Our environmental policy, which began many years ago, has always been oriented toward a scientific approach, never ideological, making use only of well known certifications issued by qualified and internationally accredited institutes, in compliance to the regulations and norms of over 80 countries where Bartoli company operates and private international brand requirements.”*

**APPLICATION**



**100% RECYCLED**

**COMPOSITION**



Recycled raw materials are carefully selected and controlled by the qualified supply chains. We use high performances pulp which pass both mechanical and chemical tests.



**TAKE BACK.** By this project we recover “insole-factory cuttings” directly from the footwear supply chain. The “insole-factory cuttings” are collected and returned to our company to be re-used in our production process. This further increases the circularity rate and reduces waste generation.



In cooperation with Intertek laboratories, for the chemical monitoring by constant tests on our raw materials and products in compliance with international regulations. In addition, the most restrictive limits of luxury brands become our benchmark limits.



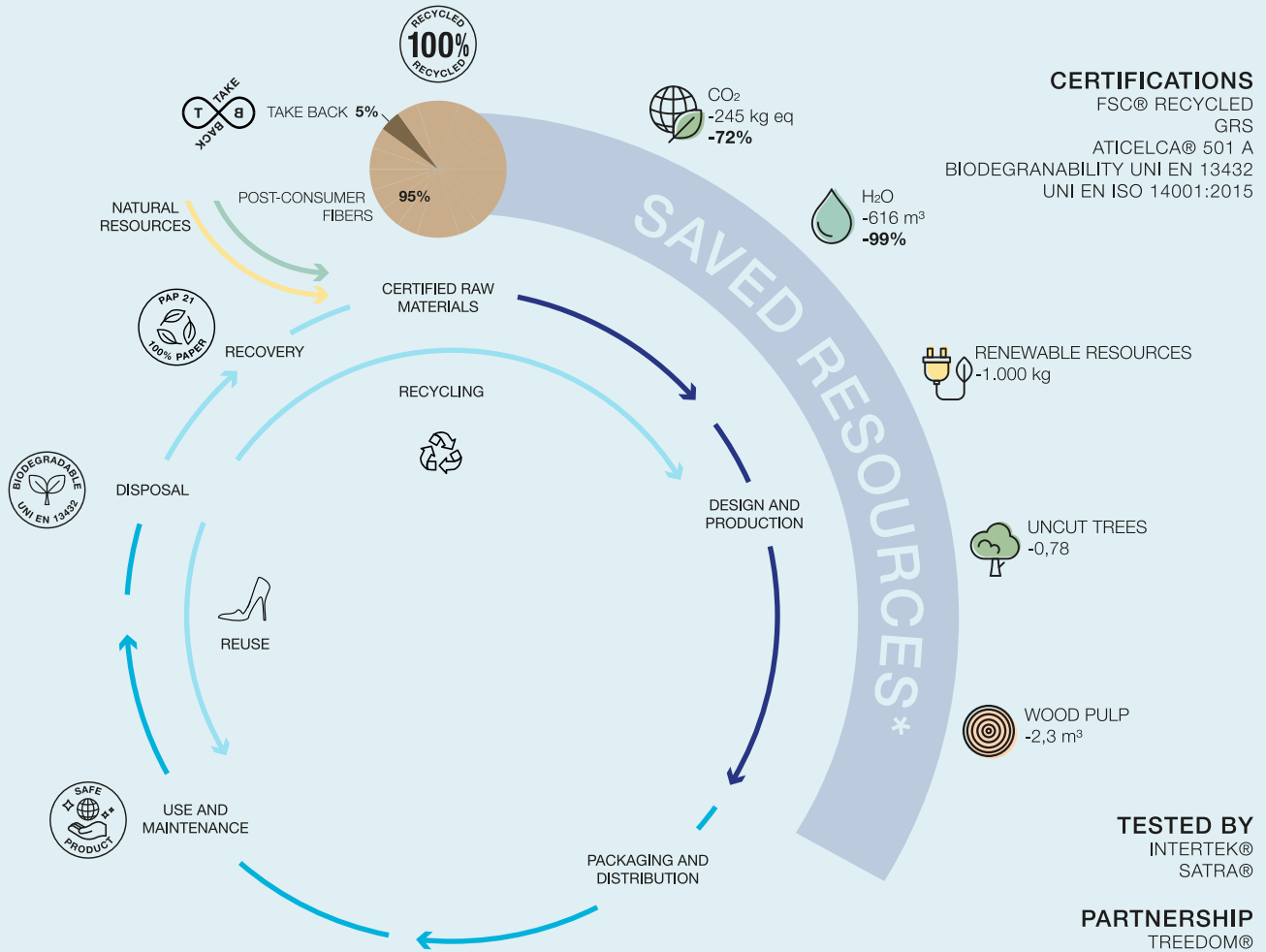
Sign up to our newsletter  
to get updates on our products.  
FRAME HERE



# LIFE CYCLE THINKING



# BCR Premium Quality



**1000 PAIR OF SHOES MADE FROM BCR 3mm\*\***

**SAVED RESOURCES**

- CO<sub>2</sub> -19 kg eq
- H<sub>2</sub>O -48 m<sup>3</sup>
- RENEWABLE RESOURCES -77 kg
- UNCUT TREES -0,06
- WOOD PULP -0,18 m<sup>3</sup>

**ENVIRONMENTAL IMPACT REDUCTION**

\* Theoretical savings values with the use of recycled paper compared to virgin paper per ton (LCA study - ERGO - Sant'Anna - Pisa).  
 \*\* Theoretical savings values with the use of recycled paper compared to virgin paper per 77 Kg (LCA study - ERGO - Sant'Anna - Pisa).



Sign up to our newsletter to get updates on our products.  
 FRAME HERE



LCT  
 BCR Premium Quality  
 06/2023